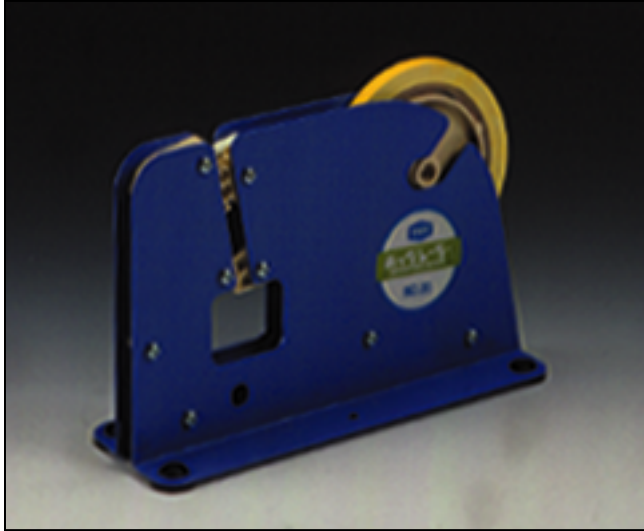


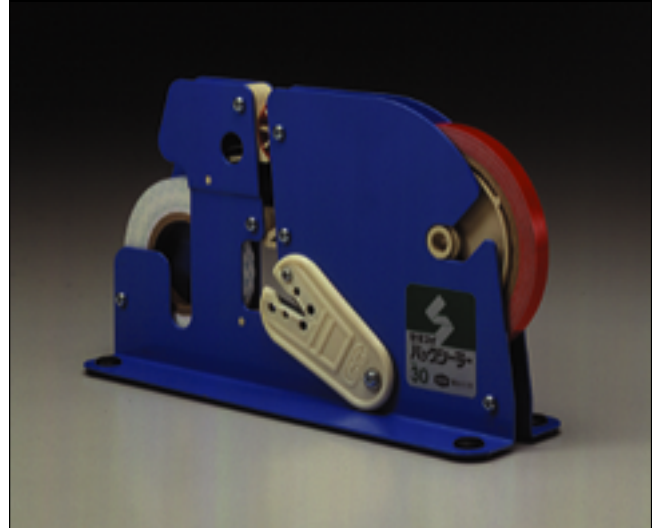
# Bag Sealer No. 20



Quickly and simply seal by just passing your product through the opening in the slit part.  
Easy to use, compact sealer.

Specifications				
	Size	Unit packaging (rolls)	One package (rolls)	Color
No.20	W72mmXL220mmXH142mm	1	10	Blue

# Bag Sealer No. 30



Easy to peel, "paper tab attaching sealer."  
Peel polyethylene bags` sealed necks with ease by pulling the attached paper tab.

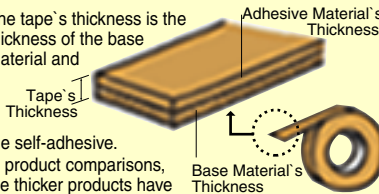
Specifications				
	Size	Unit packaging (rolls)	One package (rolls)	Color
No.,30	W70mmXL250mmXH143mm	1	10	Blue
No. 30 Exclusive paper tab	W9mmXL50mm	30	180	Red

## Tape Capacity Indicators

**Tape capacity indicators are an estimate of the conditions of the tested products.**  
Please use this as a reference for the purposes and the conditions of your applications.

### ● Tape's Thickness /Base Material's Thickness

The tape's thickness is the thickness of the base material and the self-adhesive. In product comparisons, the thicker products have stronger stretchability.



### ● Adhesive Strength

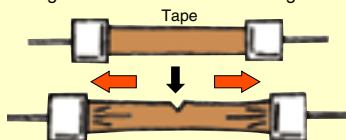
When the tape is adhered to stainless steel and it is pulled back at a 180 degree angle, the peeling strength is measured. When the figure is big, the adhesive strength is strong.



(The catalogue shows the figures measured at 180 degrees.)

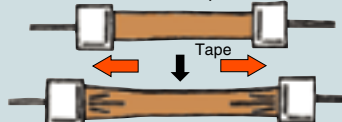
### ● Tensile Strength

This is a measurement of the pulling strength needed to tear the tape. When the figure is big, the strength of the film's base is strong.



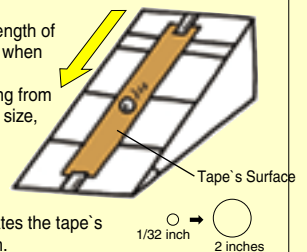
### ● Extension/Stretching

This evaluates the tape's capacity to adjust to rounded surfaces when its length is stretched. The figure is indicated as a %. For example, in the case of 150%, 1 m. of tape extends to 1.5 m.



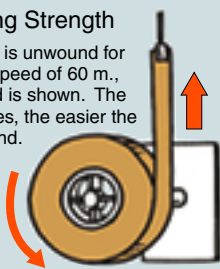
### ● Tack

This tests the strength of the self-adhesive when weight is added. Steel balls, ranging from 1/32 - 2 inches in size, are rolled down a ramp placed at a 30 degree angle. The biggest steel ball to stop indicates the tape's adhesive strength.



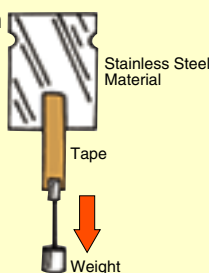
### ● Unwinding Strength

When the tape is unwound for 1 minute at a speed of 60 m., the pulling load is shown. The lower the figures, the easier the tape is to unwind.



### ● Holding Strength

The tape is adhered to stainless steel material and a weight is hung from it. After 2 hours, the tape's change in position is measured. The smaller the figures, the stronger the tape resists change in position, and it can really seal cardboard boxes.



■ The capacities indicated in our catalogue are based on international standards (SI). The figures in ( ) indicate the capacities up until now.

■ The measurements are based on these measuring methods and experiments performed on JISZ0237 adhesive tape.